

# SUPERSONIC

## HEPWORTH ACOUSTICS SEES 5000TH MILESTONE WITH BANKS MINING

Hepworth Acoustics recently celebrated their 5,000th project with a noise assessment for a client that really appreciates their expertise.

Banks Mining, a Hepworth Acoustics client since 1993, needed to provide an environmental statement for their plans for a new surface mine at Brenkley Lane, near Seaton Burn. As the site sits on the border between Newcastle City Council and Northumberland County Council, the proposals had to be sent to both councils. This meant even more emphasis on getting every element of the application just right, and the environmental statement was no different.

They turned once more to Hepworth Acoustics to analyse the noise impact on local communities as part of this assessment. Mark Dowdall, The Banks Group's Environment and Community Director, is clear about why Hepworth Acoustics were chosen for this job. "They are absolute experts in noise assessment," he said. "We now know that Hepworth's noise predictions are accurate and we can go ahead in full confidence that we will be able to comply with site noise limits agreed with the planning authority." It's important that the noise assessment is completely comprehensive, covering all phases of the mining project, from the initial preparation of the site to restoration at the end, and investigates all sources of noise. Having spent one million pounds in

recent years to fit acoustic treatment to reduce noise from their plant, it's clear that noise is treated very seriously at Banks Mining.

Banks monitored the current background levels of noise at 13 of the premises closest to the proposed site. These levels were then handed over to Hepworth Acoustics who modelled the future noise levels of the different phases of site activity to compare with those base levels.

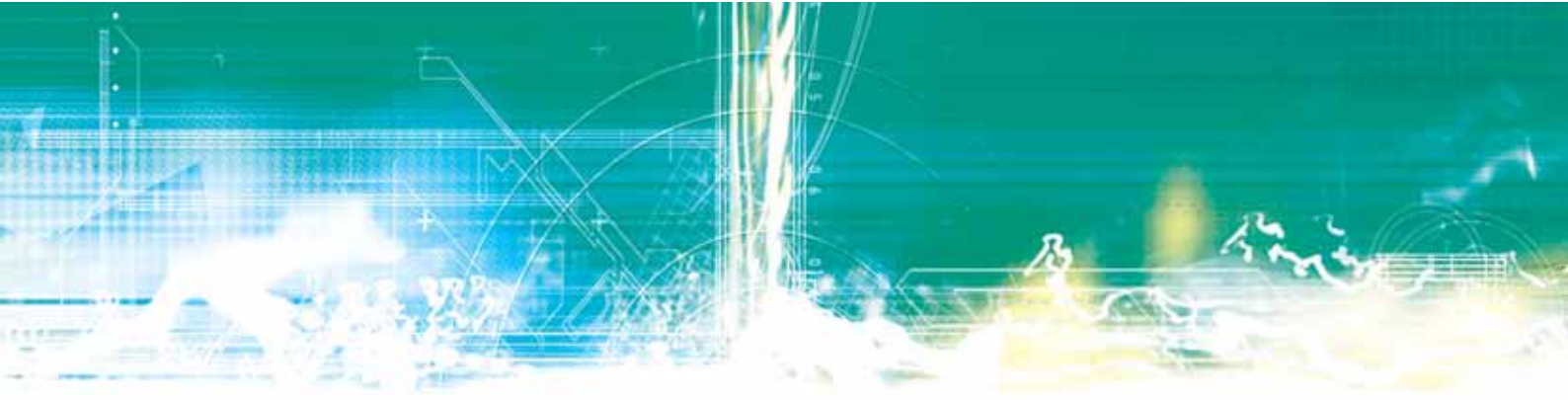
Hepworth Acoustics followed the phasing plans provided by Carl Drury, Mining Projects Manager for Banks Mining, who experienced a good working relationship with Hepworth Acoustics.

Carl explained that mounds are constructed in different locations throughout the life of the mine to act as visual barriers as well as reducing noise levels. "My phasing plans describe how, when and where the mounds go up and down through the life of the site," he said. "The project followed an iterative



process," said Carl, "as Hepworth Acoustics would say, for example, that this mound needed to be eight metres high rather than four metres. This then meant restructuring the plan and remodelling the noise assessment, using 3D software which could account for changes in mound heights."

It's not unusual that Hepworth Acoustics 5,000th client project came from Banks Mining. Mark Dowdall said, "We use Hepworth Acoustics for all our mineral and waste projects." Paul Bassett, Western Regional Director for Hepworth Acoustics, said, "This clearly shows the value of satisfying customers' demands, and treating each job with equal importance. For Banks Mining to use us consistently for fifteen years vindicates our philosophy of providing a high quality service to our clients." Both Hepworth Acoustics and Banks Mining are clearly happy with the results of their long-lived relationship. It would surprise nobody if the 10,000th project celebration were to involve Banks Mining once again.



## BUILDING FOR THE FUTURE

Holbeck Urban Village, an up and coming quarter of Leeds within walking distance of the railway station and city centre, is the site of one of the larger schemes that Hepworth Acoustics has worked on recently.

The Manor Mills Project is just being completed and comprises 278 smartpads, studios and 1 and 2 bedroom apartments arranged over 9 floors, with offices, car parking and amenity areas. Internationally acclaimed design company YOO has brought a strong and innovative design concept to the scheme.

This is just one of the projects that Hepworths have worked on for award winning developer K W Linfoot.

Hepworth Acoustics has been involved in the project since early 2006 from the initial planning application stage through to final testing. Working initially for the developers and for the contractor Ocon Construction during the build phase, Hepworths also liaised closely with Brewster Bye Architects in order to produce cost effective acoustic design details.

A noise assessment was required as part of the planning application submission

followed by sound insulation advice to ensure that the proposed construction would meet the requirements of Approved Document E to the Building Regulations. Advice was also given on cost effective ways of meeting the requirements for absorption in common areas such as corridors. Inspections of the work in progress and early indicative sound insulation were carried out giving all concerned the peace of mind that the appropriate level of sound insulation was being met by the construction. Finally 28 sets of sound insulation tests (168 individual tests) were carried out and certified through Hepworth Acoustics' membership of the Association of Noise Consultants' sound insulation testing scheme. All tests passed, ensuring that the residents who are now moving in will have the right level of acoustic separation from neighbouring apartments.

Chris Hildreth, a director of K W Linfoot, says, "Hepworth Acoustics has worked closely with us at all stages of the project to ensure a cost effective acoustic design and compliance with all acoustic regulations. Their prompt response and expert advice has ensured that the project has run smoothly to an effective conclusion. Manor Mills is an exciting new place to live and is a tribute to the design team of which Hepworths were a part."



## HEPWORTH INVESTS IN THE FUTURE OF ACOUSTICS

With higher education fees becoming a major issue for students Hepworth Acoustics decided that they should put money into the development of suitably qualified people in the field of acoustics. The result is a scholarship for the MSc Environmental Acoustics degree taught at the University of Salford. It has just been announced that this year's scholarship

that covers the tuition fee for this one year course, has been awarded to Miss Reena Mahtani Mirchandani. She is a Spanish national who graduated in Telecommunications Engineering in Spain and then lived in the Republic of Ireland.

As Reena says: "Acoustics is becoming more important as technology and



*industry develop. One of the major problems suffered in any city is noise and measures to make everyone's life more comfortable are crucial. Hepworth Acoustics know how important choosing a Masters programme is nowadays and they want to encourage people interested in Acoustics to study the MSc Environmental Acoustics at Salford."*

The Hepworth Acoustics Scholarship covers her tuition fees for this one-year

degree. Dr. Andy Moorhouse, the leader of the MSc Environmental Acoustics programme at Salford appreciates the involvement of interested companies.

*"The support of consultancy companies has been very important to us in developing this course, and Hepworth's have played a lead role by having the vision to support students with this scholarship,"* he says. *"We know that*

*industry highly values our acoustics graduates but it's not always easy to get the message out that there are good prospects in acoustics. Endorsement from a leading company like Hepworth's speaks volumes and we are very grateful."*

As Reena says: *"This is the perfect way of starting my career in acoustics, with the support of a great company which invests in education and people."*

## GUIDE DOGS

In 2008, Hepworth Acoustics has been involved in several projects involving animals, including assessing the audibility of 'neighing' horses at dwellings near to stables. However, most notable has been our involvement with The Guide Dogs for the Blind Association. Over the year, we have provided advice about a range of acoustic matters, predominantly associated with barking guide dogs.

The Guide Dogs for the Blind Association is a world leader in breeding and training guide dogs and has been providing guide dogs for blind and partially-sighted people for over 75 years. There are around 4,500 guide dog owners throughout the UK, Guide Dogs relying almost entirely on voluntary donations to fund its ongoing services for blind and partially sighted people. Around 1,000 puppies – the next generation of guide dogs – are born every year.

Originally, Hepworth Acoustics was commissioned to assess the occupational noise exposure of dog care staff at the new Guide Dog Training School at Forfar in Scotland and to advise on acoustics within one kennel block in particular. With an emphasis on dog welfare and socialisation, the kennels at the new Forfar School were designed to be open plan, with one kennel



featuring a high ceiling and a viewing window at high level for visitors to observe the guide dogs in their kennels. The high ceiling and predominantly tiled surfaces within this kennel block led to a high level of reverberation in the room which resulted in an unpleasant acoustic environment when dogs were barking.

Hepworth Acoustics carried out a series of noise and reverberation time measurements and advised on measures to improve the acoustic quality in the kennel. Subsequent works to install acoustically absorptive ceiling and wall panels significantly reduced the reverberation in the kennel with a corresponding improvement to the acoustic environment which was welcomed by dog care staff. Advice on dog care staff noise exposure was also provided in

respect of the Control of Noise at Work Regulations, 2005.

Following on from this work at Forfar, Hepworth Acoustics was asked to provide acoustic design advice in respect of a very similar new facility at Atherton, near Bolton. This work included reviewing the specification of separating walls and floors between kennels and offices and training rooms to ensure that dog barking noise did not unduly affect other activities in the building.

Since then, Hepworth Acoustics has carried out assessments of occupational noise exposure for staff at an older style Guide Dog Training School at Bolton and staff responsible for transporting guide dog puppies in cars.

## Who's who



**RIC  
HAMPTON**

Born in Reading, Ric moved to Bristol to study Music Systems Engineering, with modules in Architectural Acoustics at UWE. He worked servicing audio equipment before joining Hepworth in 2007, where he could put theory into practice. One of his first assignments was assessing the sound insulation of buildings outside a night club, close to student residences.

After assessing sound during the day, Ric creates his own at night, taking lead vocals in a band soon to be seen on YouTube. To make sure he is fully fit and his competitive edge is honed, he plays basketball in division 4 of the national league.



**ANTONIO  
MEIRELES**

Our newest consultant, Antonio joined the company in June 2008 in London. He had lived in London once before, while studying Environmental and Architectural Acoustics for his second degree. He relishes the variety of projects his role provides, particularly since he is out on site as much as he is in the office.

As London is busy and crowded it is the ideal place to be; there is plenty of work with noise and an active social life, with something always going on. Antonio reads thrillers to relax from the demands of work; perhaps he is fixed on the adrenalin.



**DAVID  
SPROSTON**

Jobs selling cars and mixing soundtracks finally gave way to one where David could put his degree to good use: joining Hepworth. After two and half years, the work is still interesting, with nothing ever the same. His favourite location so far was a deserted mill very early one morning, capturing sound data and some stunning photos at the same time, accompanied by pigeons in the cold morning light.

A persistent traveller David has just taken extended leave with his friends, fiancé and a camera. He travelled from the UK to Beijing, Bali, Australia and beyond. Welcome back David.

### ASHFORD

Henwood Pavilion, Henwood, Ashford, Kent TN24 8DH  
T 01233 643900 F 01925 579160 E [ashford@hepworth-acoustics.co.uk](mailto:ashford@hepworth-acoustics.co.uk)

### BIRMINGHAM

Concorde House, Trinity Park, Solihull Birmingham B37 7UQ  
T 0121 635 5565 F 01925 579185 E [birmingham@hepworth-acoustics.co.uk](mailto:birmingham@hepworth-acoustics.co.uk)

### BRISTOL

1st Floor, Aztec Centre, Aztec West, Almondsbury, Bristol BS32 4TD  
T 01454 203533 F 01925 579170 E [bristol@hepworth-acoustics.co.uk](mailto:bristol@hepworth-acoustics.co.uk)

### EAST MIDLANDS

The Old Vicarage, Market Place, Castle Donington, Derbyshire DE74 2JB  
T 01332 856324 F 01332 810769 E [eastmidlands@hepworth-acoustics.co.uk](mailto:eastmidlands@hepworth-acoustics.co.uk)

### LEEDS

5th Floor, 2 Wellington Place, Leeds LS1 4AP  
T 0113 3662077 F 01925 579150 E [leeds@hepworth-acoustics.co.uk](mailto:leeds@hepworth-acoustics.co.uk)

### LONDON

Hamilton House, Mabledon Place, London WC1H 9BB  
T 020 7554 8710 F 01925 579180 E [london@hepworth-acoustics.co.uk](mailto:london@hepworth-acoustics.co.uk)

### NEWCASTLE

13 Beverley Terrace, Cullercoats, Tyne and Wear NE30 4NT  
T 0191 253 3954 F 01925 579150 E [newcastle@hepworth-acoustics.co.uk](mailto:newcastle@hepworth-acoustics.co.uk)

### PLYMOUTH

The Business Centre, 2 Cattedown Road, Cattedown, Plymouth PL4 0EG  
T 01752 264470 F 01925 579150 E [plymouth@hepworth-acoustics.co.uk](mailto:plymouth@hepworth-acoustics.co.uk)

### PRINCES RISBOROUGH

Hemley Hill, Shootacre Lane, Princes Risborough, Bucks HP27 9EH  
T 01844 342487 F 01844 342487 E [birds@hepworth-acoustics.co.uk](mailto:birds@hepworth-acoustics.co.uk)

### SHEFFIELD

The Innovation Centre, 217 Portobello, Sheffield S1 4DP  
T 0114 224 2428 F 01925 579165 E [sheffield@hepworth-acoustics.co.uk](mailto:sheffield@hepworth-acoustics.co.uk)

### WARRINGTON

5 Bankside, Crosfield Street, Warrington WA1 1UP  
T 01925 579100 F 01925 579150 E [enquiries@hepworth-acoustics.co.uk](mailto:enquiries@hepworth-acoustics.co.uk)

