

SUPERSONIC

REACHING FOR THE SKY

Imagine – two glass-clad towers, one 54 storeys and the other 31 storeys high, pointing up into the sky in central Leeds. Soon this vision will begin to become a reality as construction starts on the Lumière development. Tower I of the development is due to be one of the tallest buildings in the UK - indeed, one of the tallest residential developments in the whole of Western Europe.

There are many acoustics issues to be considered on the development and that's why Hepworth Acoustics have been called in to provide acoustics consultancy services.

The towers will contain prime residential living space with high quality retail, commercial space and a healthcare centre. Tower I includes 110 properties aimed at the over 55s, as well as a selection of apartments and studios, with penthouse office space on the top floors. Tower II will provide extensive retail space, sitting under eleven floors of state-of-the-art office space and 240 apartments. A glazed public winter garden will link the two towers at ground level alongside a central piazza.

Developer K W Linfoot had already worked with Hepworths on a number of previous projects before appointing them to handle all the acoustic services for the building including acoustic design, supervising construction and sound insulation testing.

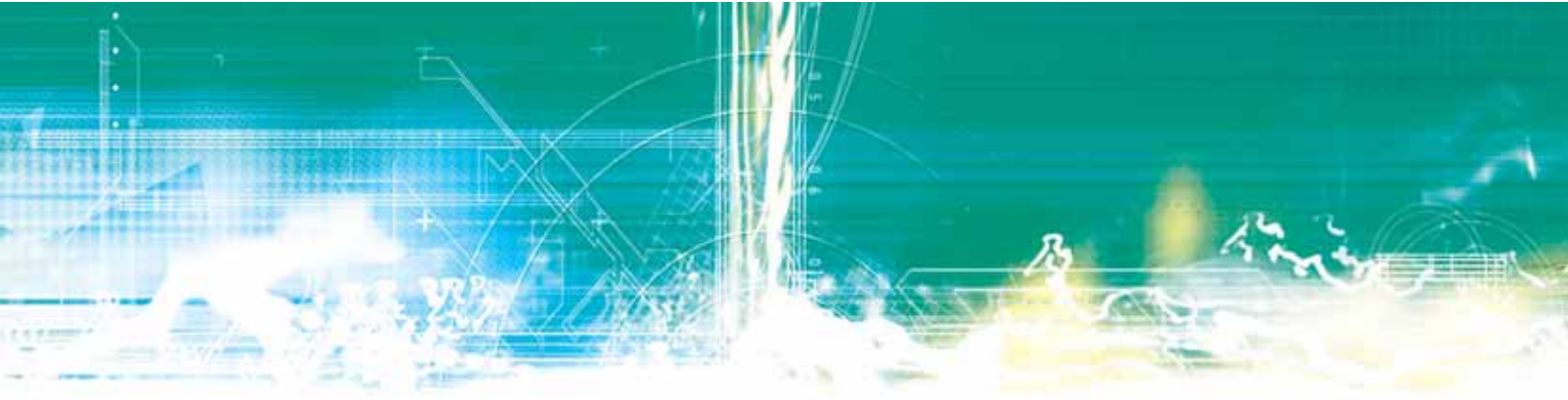
Ged Feeley, commercial director of K W Linfoot, explains why they chose Hepworth Acoustics: "Lumière is to become one of the city's most desirable addresses and its combination of residential and commercial space means that the acoustic design has to be first class and well planned. We are going with Hepworth Acoustics because we need to work with a firm that fully

understands this, is comfortable operating at such a large scale and can ensure the building meets all of the acoustic design criteria throughout."

Hepworth Acoustics is currently working closely with Ian Simpson Architects and Brewster Bye Architects on the acoustic design of the development. Work on the site is due to start in due course.

Peter Hepworth, managing director of Hepworth Acoustics, comments, "The Lumière project is further proof that Hepworth Acoustics has the experience and expertise to deal with the complex acoustic issues arising in modern multi-use developments, no matter how large they are."





CREATING AN OASIS OF QUIET IN DUBAI

Hepworth Acoustics has offices all over the UK, and their consultants are accustomed to working anywhere from Inverness to Exeter, as well as in Ireland and across Europe. Now, though, the Hepworth Acoustics presence is spreading even further afield, thanks to the company having won two contracts for work in the United Arab Emirates.

The first project involves a review of the noise emission from the plant rooms at the Marinascape development, a job for which Hepworth Acoustics has been engaged by the mechanical consultant on behalf of Trident International. Hepworth Acoustics is assessing the noise emission to ensure that it does not have an adverse effect on the enjoyment of the adjoining areas, which vary from residential apartments to a gymnasium and a yoga room.



Almas (meaning Diamond in Arabic) Tower is a landmark tower set on an island in the Jumeirah Lakes precinct. It will be the focal point of this entire area of Dubai and will house the Dubai Diamond Exchange.

Hepworth Acoustics managing director Peter Hepworth has been to Dubai on a number of occasions to meet with existing and potential clients and on a recent trip with Peter Pirozek from the Birmingham office the two Peters identified and proposed solutions in relation to chiller noise at one of the more affluent (and amazingly green) villas in the outer suburbs of Dubai.

Hepworth Acoustics has received expressions of interest from a number of potential clients in the Middle East and the company looks forward to being involved in many more projects in this incredibly exciting and fast-paced part of the world.

The Almas Tower under construction



The Marinascape development is in Jumeirah at the heart of the Dubai Marina and consists of a podium level development of car parking and retail as well as sea front villas and two residential towers, the 26 storey Avant Tower and 34 storey Oceanic Tower.

Hepworth Acoustics is also working on a full review of the mechanical services system of the Almas Tower in Jumeirah Lakes. This development consists of 63 storeys of office space and Hepworth Acoustics is carrying out calculations and assessments to ensure that the noise from the various mechanical service systems meets the project design noise goals within each of the offices. Noise from diesel generators and car park supply and extractor fans are also being assessed.

Marinascape.com



CLEARED FOR TAKE-OFF

Gulliver's World is a large children's theme park in Warrington and is a major leisure attraction in the North-West. The site occupies part of the former American WW2 Airbase at Burtonwood which inspired the film *Memphis Belle*. To commemorate this history, Gulliver's were approached by the Burtonwood Heritage Association with a view to housing a museum and a static display of historic WW2 aircraft at the site. Following this, plans were drawn up for an aircraft museum and heritage attraction together with an 80-bed hotel on land next to the existing theme park.

Council officers recommended approval of the proposals subject to conditions but, in the light of considerable public objections, Councillors on the Planning Committee refused planning permission, one of the reasons cited being potential noise disturbance.

Gulliver's World appealed against the decision of the Council and the matter was heard at a Public Inquiry.

Evidence on noise matters was given by Paul Bassett, Hepworth Acoustics' Technical Director. One of the noise issues was potential impact from increased visitor traffic on the access road which passes close to houses.

At the Public Inquiry Paul presented evidence that the provision of a substantial acoustic fence alongside the access road would adequately reduce the impact of noise from the forecast additional traffic and would also provide the benefit of reducing noise from the existing visitor traffic.

The Planning Inspector agreed with this finding and, having considered all the evidence presented by the various parties, decided to allow the appeal.



AN EYE TO THE FUTURE

As a rapidly expanding acoustics consultancy, Hepworth Acoustics is always on the look-out for high-quality graduates to take into the firm – and what better way to ensure a steady stream of appropriately qualified graduates than to endow a scholarship? This is precisely what the company has done, by setting up the Hepworth Acoustics Scholarship at Salford University, a university with which the company already has an excellent working relationship.

The Hepworth Acoustics Scholarship will provide funding for a graduate student undertaking studies towards an MSc in Environmental Acoustics at Salford. This is a new Masters programme, designed to take graduates in engineering or the sciences and provide them with the knowledge and skills to work in environmental acoustics – and as acoustics consultancies and local government alike are crying out for suitably qualified graduates, the setting up of the scholarship appears to be one of those extremely rare beasts, a win/win situation.



Who's Who



**RICHARD
WATSON**

Richard is one of the longest-serving members of the Hepworth team, having joined the company at the turn of the millennium. He holds an engineering degree in acoustics and is a chartered engineer. Richard is involved in all areas of Hepworth's acoustics consultancy workload from the Sheffield office, and is also one of the authors of *The Little Red Book of Acoustics*, due for release in the summer of 2007. For more information on *The Little Red Book*, go to the Hepworth Acoustics website at www.hepworth-acoustics.co.uk



**CAROLINE
WHITTLES**

Caroline Whittles joined Hepworth Acoustics in August 2004. She is a member of the Association of Accounting Technicians. She is the Office/Financial Manager for the Company and is based at the Head Office in Warrington. She is in charge of the Accounts/Administration team, managing all the accounts, including VAT and payroll. When Caroline is not ensuring the smooth running of the company's finances she enjoys spending time with her family, taking her daughter for walks and teaching her to ride a bike!



**MATTHEW
LAWRENCE**

Matthew joined the Ashford office of Hepworth Acoustics in January 2001, having been working in environmental health in Kent. He was delighted to move away from a constant stream of 'noisy neighbour' complaints and to join the wider world of acoustics consultancy. He is especially interested in working on building acoustics. Matthew has two particular passions – he loves holidaying in the sun, and he enjoys sci-fi. The new *Dr Who* series is a source of great pleasure to him.

ASHFORD

Henwood Pavilion, Henwood, Ashford, Kent TN24 8DH
T 01233 643900 F 01925 579160 E ashford@hepworth-acoustics.co.uk

BIRMINGHAM

Concorde House, Trinity Park, Solihull Birmingham B37 7UQ
T 0121 635 5565 F 01925 579185 E birmingham@hepworth-acoustics.co.uk

BRISTOL

1st Floor, Aztec Centre, Aztec West, Almondsbury, Bristol BS32 4TD
T 01454 203533 F 01925 579170 E bristol@hepworth-acoustics.co.uk

EAST MIDLANDS

The Old Vicarage, Market Place, Castle Donington, Derbyshire DE74 2JB
T 01332 856324 F 01332 810769 E eastmidlands@hepworth-acoustics.co.uk

LONDON

Hamilton House, Mabledon Place, London WC1H 9BB
T 020 7554 8710 F 01925 579180 E london@hepworth-acoustics.co.uk

NEWCASTLE

13 Beverley Terrace, Cullercoats, Tyne and Wear NE30 4NT
T 0191 253 3954 F 01925 579150 E newcastle@hepworth-acoustics.co.uk

SHEFFIELD

The Innovation Centre, 217 Portobello, Sheffield S1 4DP
T 0114 224 2428 F 01925 579165 E sheffield@hepworth-acoustics.co.uk

WARRINGTON

5 Bankside, Crosfield Street, Warrington WA1 1UP
T 01925 579100 F 01925 579150 E enquiries@hepworth-acoustics.co.uk

